

THE WIRELESS VIDEO OTOSCOPE



DELFINO

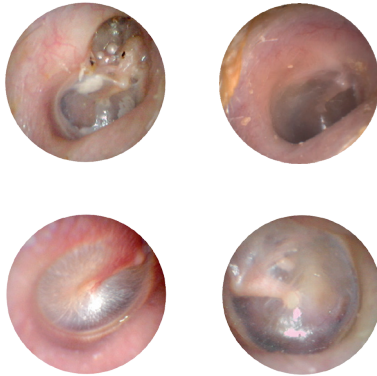


Video endoscopy
line



THE HAND PIECE:

- Endoscopic gradient-index optics
- LED illumination
- CMOS camera
- Li-Ion battery, allowing two hours of uninterrupted use
- Wireless video transmission system
- Compatible with standard speculum.



THE RECEIVER BASE:

- Recharges the hand piece battery
- Embeds a pre-heating system for preventing the optics fogging
- USB digital output for the direct connection to the computer
- Analog video output for the connection to any standard display.



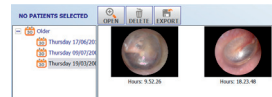
Delfino is composed of the receiver base and the hand piece.



DELFINO

Delfino is the evolution of the traditional otoscope: the small and ergonomic hand piece allows the operator to see, capture and store top-quality images of the ear canal.

All this with the maximum patient and operator comfort, thanks to the wireless feature.



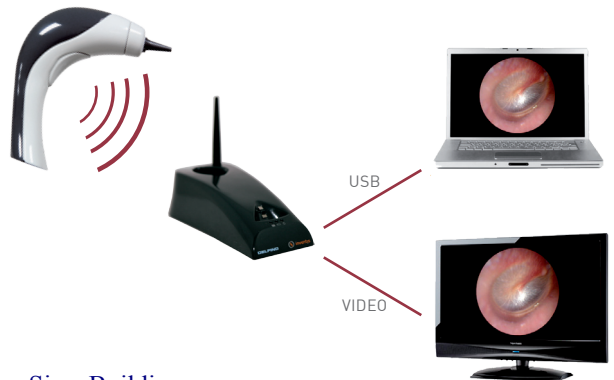
Dedicated image acquisition software included in the box NOAH module available.

TECHNICAL DATA

Illumination.....	LED array
Optics	Endoscopic gradient-index optics
Camera.....	CMOS sensor, res. 720 x 576
Min. working dist.....	10 mm
Battery.....	Li-Ion rechargeable
Video transmission	7 selectable channels
Pre-heating.....	in the receiver base
Video outputs	digital USB 2.0 and analog composite
Weight	base: 500 g - hand piece: 180 g
Dim. (WxHxD)	base: 105 mm x 75 mm x 250 mm hand piece: 220 mm x 90 mm x 140 mm
Classification.....	Class I (MDD 93/42, Annex IX)

COMPUTER MINIMUM REQUIREMENTS:


Processor.....	Intel Core 2 Duo 1.6 GHz
RAM.....	1 GB (2 GB suggested)
Hard disk.....	1 GB free space
Display resolution	1024 x 768
Operating system.....	Microsoft Windows XP SP2, Vista, 7



Delfino is developed by:

INVENTIS s.r.l.
CORSO STATI UNITI, 1/3
35127 PADOVA - ITALY
PHONE: +39.049.8962 844
FAX: +39.049.8966 343
info@inventis.it
www.inventis.it

Follow us on Twitter
<http://twitter.com/inventissrl>

 The Inventis Quality System complies with ISO 9001 and ISO 13485 standards.

Inventis® is a registered trademark of Inventis s.r.l.

SMITECH (ASIA) PTE LTD
75 Bukit Timah Road #06-13 Boon Siew Building.
Singapore 229833
Tel: 6339 5277 Fax: 6339 0253 Email: smitech@pacific.net.sg
www.smitechasia.com.sg