



Kronos B
18-23



Kronos B
Speedy 6



Kronos S and N
18-23



Energy
18-23

Kronos Autoclaves

fast sterilization

Newmed

Kronos S

18-23

Kronos N

18-23



S

Pre and Post vacuum

With Double-stage Vacuum Pump

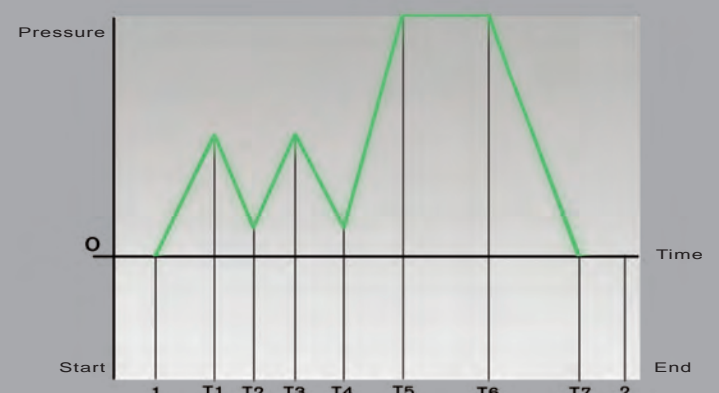
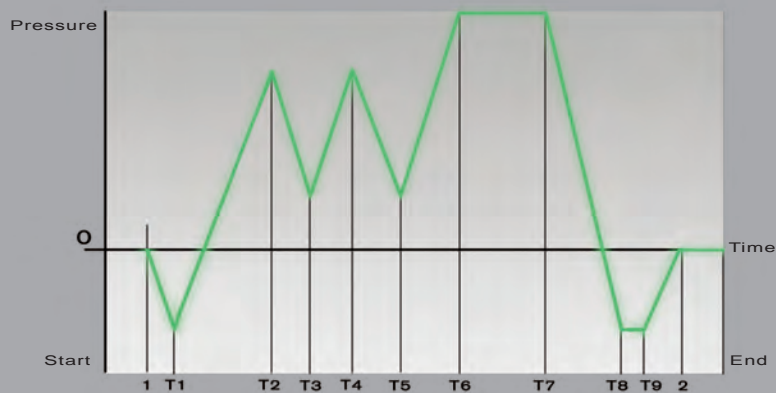
N

Thermodynamic vacuum

Electronically Controlled

COMPLETE GRAPHIC CYCLE KRONOS S

COMPLETE GRAPHIC CYCLE KRONOS N



KRONOS S 18-23
STERILIZABLE PRODUCTS



SOLID INSTRUMENTS



WRAPPED INSTRUMENTS



SMALL POROUS LOADS

KRONOS N 18-23
STERILIZABLE PRODUCTS



SOLID INSTRUMENTS

Kronos S and N

18-23



Standards EN-13060



Motor-operated closure
with triple-protection, guarantees a total safety, greater ease of handling and a reliable self-regulation of the hatch.



Instantaneous Vaporizer
outside the chamber allows higher sterilization speeds and reduces water consumption.



Thermal printer
installed on board the machine to allow complete recording of the sterilization cycle. Ensures the user greater cycle control and easy archiving.



Multi-language graphic display
makes it easier for the operator to select the sterilization cycles, continuous control over the cycle phases and gives graphic indication of the errors committed by the operator.



Connection to STS-Data logger system
It is possible to store the data on a PC.



Stainless steel chamber
Made of thick one-piece moulded steel



Connection to Demineralization/Osmotic Systems



FEATURES

ADVANTAGES

Motor-operated closure



+ ergonomics

Instantaneous vaporizer



+ speed
- consumption

Standard printer



+ control

Loading with self-priming pump



+ practical

Graphic display



+ easier

Latest Software



+ process
self-control

Possibility of connection to data logger



+ archiving

Provision for connection to demineralizer and direct dirty water drainage



+ handy

Electronic drying in vacuum (kronos S only)



+ safety

Double loading tank and water drainage



+ hygiene

Moulded one piece stainless steel chamber



- porous

Memory Test System



+ diagnostics



+ safety

Bowie and Dick Vacuum Test

Energy

18-23

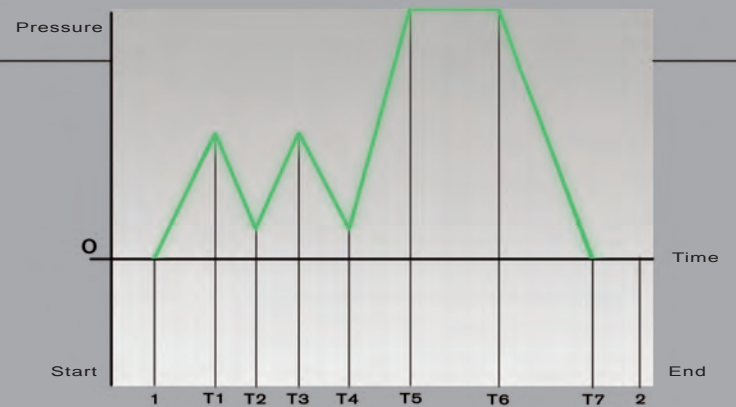
Completely Automatic
controlled by microprocessor



Thermodynamic vacuum

Electronically Controlled

COMPLETE GRAPHIC CYCLE ENERGY



ENERGY 18-23
STERILIZABLE PRODUCTS



SOLID INSTRUMENTS



Energy

18-23



FEATURES



The closure system
Easy and practical with double safety



INOX chamber
Thick one-piece moulded steel



LCD Display
Makes it easier for the operator to select the sterilization cycles, allows a continuous control over the cycle phases and gives an information of the errors committed by the operator.

Closure system
Easy and practical

Stainless steel chamber
Single piece moulded steel

LCD display with continuous temperature and pressure display

Double sensor

Double control
of sterilization process

Electronic Transducer
Allowing a precise check of pressure

Two electronic temperature probes
for measuring the temperature inside and outside the sterilization chamber

Internal tank with probe
which shows the minimum and maximum level on the display

Loading of water through a self-priming pump

Sterilization cycles
Completely automatic:
2 sterilization cycles at 121°
2 sterilization cycles at 134°

THE PROGRAMS MENU

Designed for perfect sterilization of various materials, thanks to the combination of vacuum, temperature and drying.

Cycles Tables

Kronos B 18-23

Materials and instruments	Program	Vacuum phases	Total time*
Delicate hollow** and rustproof hollow (wrapped)	121° Hollow wrapped	4	28 minutes
Rustproof hollow (wrapped)	134° Hollow wrapped	4	15 minutes
Solid made of rubber and delicate solids (wrapped)	121° Solid wrapped	2	28 minutes
Rustproof solid (wrapped)	134° Solid wrapped	2	15 minutes
Rustproof solid and hollow (wrapped)	134° Prion	4	30 minutes
Delicate, hollow and porous (wrapped)	121° Porous	4	33 minutes
Solid rustproof, hollow, and porous (wrapped)	134° Porous	4	20 minutes
Solid made of rubber and delicate (unwrapped)	121° Rapid	2	22 minutes
Solid rubber (unwrapped)	134° Rapid	2	9 minutes
Hollow made of rubber and stainless steel (unwrapped)	134° Open hollow	4	9 minutes
Test Cycle for Helix and Bowie & Dick	134° Helix/B&D Test	4	7.5 minutes
Test Cycle for vacuum	<40° Vacuum Test	1	15 minutes

* Including drying phase, excluding preheating. The preheating may vary from 20 to 25 minutes depending on the load

** Type A and B hollow instruments, in accordance with EN 13060

*** For Kronos B23 the total time must be increased by 15 minutes

Kronos B Speedy

Materials and instruments	Program	Vacuum phases	Total time*
Delicate hollow** and rustproof hollow (wrapped)	121° Hollow wrapped	4	28 minutes
Rustproof hollow (wrapped)	134° Hollow wrapped	4	15 minutes
Delicate hollow and rustproof hollow (unwrapped)	121° Open hollow	4	20 minutes
Hollow rubber and rustproof hollow (unwrapped)	134° Open hollow	4	7 minutes
Rustproof solid and hollow (wrapped)	134° Prion	4	30 minutes
Delicate, hollow and porous (wrapped)	121° Porous	4	33 minutes
Solid rustproof, hollow, and porous (wrapped)	134° Porous	4	20 minutes
Solid made of rubber and delicate (unwrapped)	121° Solid open	2	20 minutes
Solid rustproof (unwrapped)	134° Solid open	2	7 minutes
Solid rustproof (wrapped)	134° Solid wrapped	2	15 minutes
Test Cycle for Helix and Bowie & Dick	134° Helix/B&D Test	4	6 minutes
Test Cycle for vacuum	<40° Vacuum Test	1	15 minutes

* Including drying phase, excluding preheating. The preheating may vary from 7 to 10 minutes depending on the load

** Type A and B hollow instruments, in accordance with EN 13060

Kronos S 18-23

Materials and instruments	Program	Vacuum phases	Total time*
Delicate hollow** and rustproof hollow (wrapped)	121° Hollow wrapped	2	30 minutes
Rustproof hollow (wrapped)	134° Hollow wrapped	2	22 minutes
Solid made of rubber and delicate solids (wrapped)	121° Solid wrapped	2	28 minutes
Rustproof solid (wrapped)	134° Solid wrapped	2	15 minutes
Rustproof solid and hollow (wrapped)	134° Prion	2	35 minutes
Delicate, hollow and porous (wrapped)	121° Porous	2	33 minutes
Solid rustproof, hollow, and porous loaded small(wrapped)	134° Porous	2	20 minutes
Solid made of rubber and delicate (unwrapped)	121° Rapid	2	33 minutes
Solid rustproof (not wrapped)	134° Rapid	2	10 minutes
Hollow made of rubber and rustproof (unwrapped)	134° Open hollow	2	11 minutes
Test Cycle for Bowie & Dick	134° B&D Test	2	7.5 minutes
Test Cycle for vacuum	<40° Vacuum Test	1	15 minutes

* Including drying phase, excluding preheating. The preheating may vary from 20 to 25 minutes depending on the load

** Type A and B hollow instruments, in accordance with EN 13060

*** For Kronos S23 the total time must be increased by 15 minutes

Kronos N 18-23

Materials and instruments	Program	Total time*
Solid made of rubber and delicate solid (with prolonged drying)	121° Solid open	33 minutes
Solid made of rubber and solid metal (with prolonged drying)	134° Solid open	21 minutes
Solid stainless steel and metal instruments	134° Prion	35 minutes
Solid made of rubber and delicate solid (with brief drying)	121° Rapid	23 minutes
Solid made of rubber and solid metal (with brief drying)	134° Rapid	11 minutes

* Including drying phase, excluding preheating. The preheating may vary from 20 to 25 minutes depending on the load

*** For Kronos N23 the total time must be increased by 15 minutes

Energy 18-23

Materials and instruments	Program	Total time*
Solid made of rubber and delicate solid	121° Long Dry	33 minutes
Solid made of rubber and solid metal	121° Short Dry	27 minutes
Solid stainless steel and metal instruments	134° Long Dry	26 minutes
Solid made of rubber and delicate solid	134° Short Dry	21 minutes

* Including drying phase, excluding preheating. The preheating may vary from 20 to 25 minutes depending on the load

*** For Energy 23 the total time must be increased by 15 minutes

Technical features

	Kronos B 18-23		Kronos B Speedy	Kronos S 18-23		Kronos N 18-23		Energy 18-23	
Motor-operated closure								Mechanical	
Door lock safety	Electric		Electric	Electric		Electric		Mechanical	
Type of Vacuum	Fractionated		Fractionated	Pre and Post vacuum		Thermodynamic		Thermodynamic	
Instantaneous Vaporizer									
Test Programs	Bowie & Dick/ Helix/Vacuum		Bowie & Dick/ Helix/Vacuum	Bowie & Dick/ Vacuum					
Onboard Printer									
Display	Graphic		Graphic	Graphic		Graphic		Digital	
M.T.S. Memory System Test									
Connection to Data Logger									
Connection to demineralizer									
Night Cycle									
Internal water tanks (loading and unloading)	2		2	2		2		1	
Chamber volume in litres	18	23	6	18	23	18	23	18	23
No. of Cycles with water loading (indicative)	8	6	18	10	8	10	8	16	12
Wrapped sterilizable weight in kg	3	4,5	1	3	4,5				
Unwrapped sterilizable weight in kg	4	6	1,8	4	6	4	6	4	6
Porous material in kg	1	1,5	0,5	0,5	1				
Empty machine weight in kg	56	60	40	45	50	43	48	40	45
Outer measurement:									
Depth mm	610	695	580	610	695	610	695	610	695
Width mm	505	505	445	445	445	445	445	445	445
Height mm	400	400	345	400	400	400	400	400	400
Supply voltage	220-240 V								
Mains frequency	50-60 Hz								
Rated power	2400 W		2500 W	2400 W		2400 W		1800 W	

standard not present

Newmed reserves the right to make modifications without prior warning

Standard Trays

	Quantity	Dimensions in mm
6 liters autoclaves	3	1 tray 150 x 240 x 19
		2 trays 115 x 240 x 19
18 liters autoclaves	4	185 x 285 x 17
23 liters autoclaves	4	185 x 440 x 17

ACCESSORIES and **Optionals**



Perfect Water

Electrical water distiller.



"Pulcino" Incubator

Incubator for biological spores.
It is used for periodic testing
of the autoclave.



Osmo2

Osmotic system with high
purification capacity.



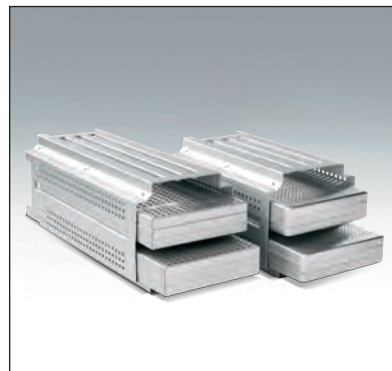
STS-Datalogger USB

Device for data collection with
direct recording on USB key,
complete with software for data
evaluation (developed for s.o.
Windows).



Tests for Autoclaves

Wide range of tests:
HELIX TEST to check sterilization
inside hollow instruments
BOWIE & DICK TEST: to check
sterilization in porous materials
CHEMICAL INDICATORS: to
check each sterilization cycle
SPORES: for the biological control
of sterilization.



Reversible Trayholders

To make autoclave load optimum
It can be used both for standard
trays and cassettes for implants.
Available for 18 and 23 Lt.
autoclaves.



Ultrasonic Tanks

Wide range of ultrasonic tanks
from 2.5 to 9 litres.
All the models are of electronic
type with automatic control
of frequency.
Equipped with stainless steel
tanks.
Many accessories are available.



Sealing machine Termoseal:

Ergonomic design and fast
sealing times.
Concealed roll-holder
Stretched 12mm seal
Dimensions:
480x198x385 mm (LXHxD)
Voltage: 230V - 50/60 Hz
Power adsorbed 100 W
Weight: 9 kg

IT IS JUST A QUESTION OF TIME...
Your time...

Directives applicable
Reference **Standards of autoclaves**

Directive: Medical Devices **93/42/EEC**

Directive: Pressure Vessels **97/23/EEC**

Directive: Small steam sterilizers **EN13060** (excluding Energy and Nubyra)

Directive: Electromagnetic compatibility **CEI EN 61326-1**

Directive: Safety instructions for laboratory apparatus **CEI EN 61010-1**

Directive: Particular requirements for sterilizers and washer-disinfectors used to treat medical materials **CEI EN 61010-2-40**



Newmed



Newmed A Midmark Company

Via Lenin, 79/A - 42020 Quattro Castella - Reggio Emilia - ITALY
Tel. +39 0522 875166 Fax. +39 0522 243096
newmed.info@midmark.com
www.newmedsrl.it